



Talia C.

## Price List for Flower & Glass Preservation

### Customers Outside Israel

You will **receive guidance and instructions** on how to safely pack and ship your glass shards and dried flowers after your purchase.

(This shipping is not included in the purchase price.)

### Customers in Israel

You may **ship or personally deliver your items** (glass shards and/or fresh or dried flowers) to the studio:

*12 Avigdor Steymatski, Tel Aviv 6963911, Israel*

Fresh flowers must arrive in the best possible condition. I need to receive them within 3 days after your event.

(If you choose to ship your items, shipping costs are not included in the purchase price.)

I can arrange shipping for your personal items for an additional **50 shekels**, except for fresh flowers, since shipping may take up to 5 days to arrive at my studio in Tel Aviv.

### Flower Drying Service

If you would like me to professionally dry your flowers for you, there is an additional service fee of **300 shekels**.

### Custom Requests

Artwork can be created using:

- only glass shards,
- only flowers,
- or both together.

If you would like to include objects other than dried flowers or glass shards, please send me a photo and I will let you know if it is possible.

I also create memorial keepsakes in loving memory of lost loved ones.



## Optional Add-Ons

- **Picture or wedding invitation** incorporation: **95 shekels**
- **Tray handles (pair)** silver, or gold: **100 shekels**
- Gold, silver, or rose gold **inscription**: **95 shekels**
- **Glass shard painting** in the color of your choice: **95 shekels**



- **Resin symbol** embedded into the artwork in the color of your choice (available only for large resin blocks): **200 shekels**

- 



- **Wedding smashing glass with pouch**: **295 shekels**





**Wedding Ceremony Smashing Glass**

Wedding smashing glass and pouch: **295 shekels**



1. Pearl



2. Pure



3. Earth



4. Garden



5. Green



6. Azur



7. Sky



8. Turkiz



9. Rainbow



10. Ceramic



11. Silver



12. Rose gold



13. Red



14. Purple



15. Amethyst



**Artwork Prices**

**Resin Mezuzahs**

**Hanging System**

**Resin:**

One transparent 3M double-sided adhesive strip is included. If you prefer hooks instead, they are available for an additional **75 shekels**.

**Glass:**

2 holes, one at each end, for hanging with nails or screws.



**Available designs:**

Resin Modern Shin

Resin Classic Shin

Resin Esh Shin



Resin Israel Map

Glass Small

Glass Big



**Sizes & Prices**

Modern/Classic/Esh

13 cm / 5 inches: **695 shekels**

15 cm / 6 inches: **785 shekels**

Israeli map

17,5 cm X 4,5 cm 6.89 inches X 1.77 inches: **795 shekels**

Glass:

Small: 14 X 5 cm / 5.5 inches X 1,9 inches: **829 shekels**

Big: 19,5 X 5 cm / 7.48 inches X 1,9 inches: **929 shekels**



**For all mezuzah models, you can choose the color of the decorative elements, including the shin and the flakes/stones used for decoration. Available colors are gold, rose gold, or silver.**



## Resin Blocks

### Available designs:

Square 10x10x5cm  
(4" x 4" x 1.97")

**699 shekels**



Square 16.5x16.5x5cm  
(6.5" x 6.5" x 2")

**995 shekels**



Square 25x25x5cm  
(9.8" x 9.8" x 2")

**1545 shekels**



Cube 10x10x10cm  
(4" x 4" x 4")

**845 shekels**



Rectangle 22x14x4cm  
(5.5" x 8.7" x 1.6")

**995 shekels**



Rectangle 21x9x6.5cm  
(8.27" x 3.54" x 2.56")

**895 shekels**



Rectangle 29.5x19.5x5cm  
(11.6" x 7.7" x 2")

**1685 shekels**



Arch 15x12x7.5cm  
(5.9" x 4.7" x 3")

**1085 shekels**



Mini Arch 13x7x3 cm  
(5.1" x 2.8" x 1.2")

**395 shekels**





## Resin Blocks

### Available designs:

Hexagon 17.5x20x4.7cm  
(6.9" x 7.9" x 1.9")

**995 shekels**



Big Heart 15.5x4cm  
(6.1" x 1.6")

**950 shekels**



Butterfly 17.5x14.5x4 cm  
(6.9" x 5.7" x 1.6")

**950 shekels**



Big tray 29.5x19.5x5cm  
(11.6" x 7.7" x 2")

**1685 shekels**



Large Thin tray 36.5x28cm  
(14,37"x11,02")

**1595 shekels**



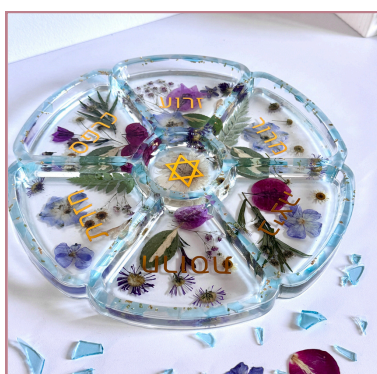
Mini tray 18 X 9 cm  
(7"x 3.5")

**595 shekels**



Ceder plate 30 cm  
(11.8 inches)

**1040 shekels**



Mini house 9.5x6cm  
(3.7x"2.36")

**745 shekels**



Small heart 10x9.5cm  
(4"x3.8")

**799 shekels**





## Resin Blocks

### Available designs:

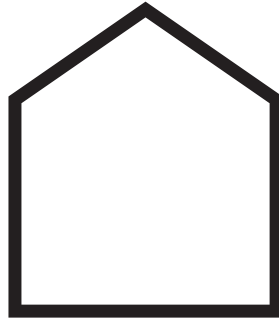
Book-end (2x) 12.6x10x6cm  
(4.96"x3.94"x2.36")

**1250 shekels**



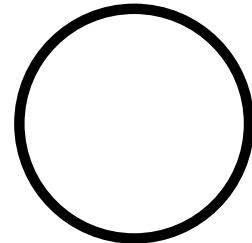
Big House 21x7x5cm  
(8.27"x2.76"x1.97)

**995 shekels**



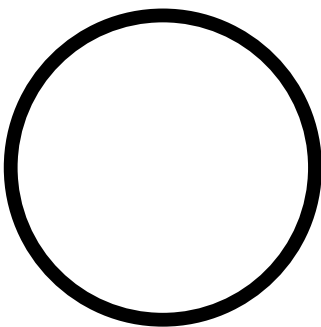
Circle Small 18x5 cm  
(7.09" x 1.97")

**950 shekels**



Circle Big 28x5 cm  
(11.02" x 1.97")

**1685 shekels**



Ring Holder 12 cm  
4.72"

**385 shekels**



Rectangle 18x12x2cm  
(7.09"x4.72"x0.79")

**699 shekels**



## Hanging hamsa

### Available designs:

Glass Big 16.5x11.5cm  
(4,5"x6,5")

**899 shekels**



Glass Small 9x13cm  
(3,5"x4,3")

**799 shekels**



Resin 13x11cm  
(5.11"x4.3")

**799 shekels**



**For all Hamsa models, you can choose the color of the decorative elements, including the flakes/stones used for decoration. Available colors are gold, rose gold, or silver.**



## Shabbat candlesticks

### Available designs:

Square short  
(for tea-light candles)

**945 shekels**



Square long  
(for tea-light candles)

**995 shekels**



Square long  
(for long candles)

**925 shekels**



Circle short  
(for tea-light candles).

**945 shekels**



Circle long  
(for tea-light candles).

**995 shekels**



Hexagon  
(for long candles)

**725 shekels**



Glass  
(for tea-light candles).

**645 shekels**



Square short  
(for long candles)

**845 shekels**



Large ball  
(for long candles)

**725 shekels**



**You can choose the color of the decorative elements,  
including the flakes/stones used for decoration.  
Available colors are gold, rose gold, or silver.**



## Framed picture and wall art

### Available designs:

Picture framed 13x8cm  
(5"x7")

**1299 shekels**



Heart Wall Art 13x8cm  
(5"x7")

**1159 shekels**



Frame 13x8cm  
(5"x7")

**1159 shekels**



## Menorah

### Available designs:

Classic 20 cm X 16,5 cm  
(7.87"x 6.5")

**1458 shekels**



Town 22 cm X 7,5 cm  
(8.6"x2.9")

**1458 shekels**



Big Arch 30X14x3 cm  
(11.81"x5.51"x1.18")

**2458 shekels**



**Suitable for standard Hanukkah candles (8 mm diameter; candles not included).**

**For all frame, wall art, and menorah models, you can choose the color of the decorative elements, including the flakes/stones used for decoration. Available colors are gold, rose gold, or silver.**



## Kiddush cup with coaster

### Available designs:

Majestic  
**889 shekels**



Classic  
**889 shekels**



Castel  
**889 shekels**



Jerusalem  
**889 shekels**



**For all kiddush cups with coasters, you can choose the color of the decorative elements, including the flakes/stones used for decoration. Available colors are gold, rose gold, or silver.**



Jewelry pieces

**Available designs:**

Magen David Magnet

**1 = 150 shekels**

**3 = 350 shekels**



Heart Magnet

**1 = 150 shekels**

**3 = 350 shekels**



S MGD Necklace

Stainless steel  
gold/silver/rose gold

**295 shekels**



M MGD Necklace  
Stainless steel gold/silver

**295 shekels**



B MGD Necklace  
Stainless steel  
gold/silver/rose gold

**295 shekels**



Chai Necklace  
Stainless steel gold/silver

**295 shekels**



S Hamsa Necklace

Stainless steel  
gold/silver/rose gold

**295 shekels**



Heart Necklace  
Stainless steel gold/silver

**295 shekels**



Map IL Necklace

Stainless steel  
gold/silver/rose gold

**295 shekels**





## Jewelry pieces

### Available designs:

Letter Keychain  
 Stainless steel  
 gold/silver/rose gold  
**1= 265 shekels**  
**2= 485 shekels**



Double heart Keychain  
 Stainless steel  
 gold/silver/rose gold  
**485 shekels**



Map IL Keychain  
 Stainless steel  
 gold/silver/rose gold  
**1= 265 shekels**  
**2= 485 shekels**



Magen David Keychain  
 Stainless steel  
 gold/silver/rose gold  
**1= 265 shekels**  
**2= 485 shekels**



Heart Keychain  
 Stainless steel  
 gold/silver/rose gold  
**1= 265 shekels**  
**2= 485 shekels**



Circle Keychain  
 Stainless steel  
 gold/silver/rose gold  
**1= 265 shekels**  
**2= 485 shekels**



2 circles Ring  
 Stainless steel  
 gold/silver  
**215 shekels**



1 circle Ring  
 Stainless steel  
 gold/silver  
**215 shekels**



Heart Ring  
 Stainless steel  
 gold/silver  
**215 shekels**





## Jewelry pieces

### Available designs:

Circle Bracelet  
Stainless steel  
gold/silver  
**285 shekels**



A pair of Cufflinks  
Stainless steel  
gold/silver  
**295 shekels**



Pendant MGD Earrings  
Stainless steel  
gold/silver  
**265 shekels**



Creole MGD Earrings  
Stainless steel  
gold/silver  
**265 shekels**



Hexagon Ring Holder  
**265 shekels**



## Contact & Showroom Visits

- **Contact:** For any questions, please contact me via WhatsApp at 054-9475022.
- **Showroom Visits:** You are warmly invited to visit my showroom to see all the models on display!
- **Hours:** Available Sunday to Thursday, from 11:00 AM to 6:00 PM, **by appointment only.**
- **To Book an Appointment: 054-9475022**



## Materials & Creations

### Materials

- Professionally Preserved Natural Flowers: Handcrafted to preserve their natural beauty. (Please note: Flower colors may shift during the preservation process).
- Premium Quality Resin: I use only the highest-quality, food-safe resin for a crystal-clear, durable finish.
- Expert Craftsmanship: Each piece is completely handmade using professional preservation techniques.

### Important Notes

- Uniquely Handcrafted: Every single piece is uniquely handmade, meaning no two items are exactly alike.
- Natural Color Transitions: Because I work with real, natural flowers, color changes can occur during the drying process:
  - Red → Transforms into a deep burgundy
  - Orange → Becomes a warm, golden yellow
  - White → Turns into an off-white or slightly translucent tone
- Leftovers: Please note that I provide leftover glass shards back to you, but I do not return leftover flowers. Any unused flowers from your bouquet will be respectfully discarded after production.

**Booking Your Flower Delivery Date:** You must coordinate with me in advance to confirm the date I will receive your fresh flowers, to ensure availability. I can only accept a limited number of bouquets for drying each month, so please contact me first to check availability. Please note that your date will only be officially reserved once your order has been placed.

### Bouquet & Glass Capacity Guidance

- Wedding Glass: Usually, one broken glass provides enough shards to create 2 different artworks plus additional jewelry pieces.
- Bouquet: With a single wedding bouquet, you can create several artworks and jewelry pieces—the exact number simply depends on the initial size of your bouquet.
- Color & Artwork Variations

Please note that the colors of the glass shards and the final artwork(s) may vary slightly from the photos, but they will remain very similar.

Each creation is entirely unique because it is handmade and tailored specifically to your personal choices. Rest assured that I will put my utmost effort, heart, and care into making your keepsake as spectacular as possible!



## **Care Instructions**

### **Smashing glass:**

- Stepping on glass can cause foot or ankle injuries, particularly if broken shards penetrate the shoe. To reduce the risk, consider covering the glass with a towel or providing additional protection. The groom should use the heel to step on it.
- Do not use this glass with any liquid or any other material. This glass is for the Jewish wedding ceremony only, not for any other purpose.
- Handwash only, avoiding harsh chemical cleaners. Handle with care. Avoid using metallic sponges on glass.

### **For all Resin & Glass Items:**

- Dusting: Dust gently with a soft, dry cloth.
- Light Cleaning: If needed, wipe with a slightly damp cloth.
- Cleaners: Do not use harsh or abrasive cleaners.
- Sunlight: Avoid direct or indirect sunlight (to prevent yellowing or fading).
- Heat: Keep away from heat sources, fire, and extreme temperatures.
- Handling: Handle with care.
- Display: Display on a stable, flat surface.
- Trays – do not cut on them, as knives will scratch the surface.

### **For Items Using Candles (Candlesticks & Menorahs):**

- Dusting: Dust gently with a soft, dry cloth.
- Light Cleaning: If needed, wipe with a slightly damp cloth.
- Cleaners: Do not use harsh or abrasive cleaners.
- Sunlight: Avoid direct or indirect sunlight.
- Heat: Keep away from heat sources, fire, and extreme temperatures.
- Handling: Handle with care.
- Display: Display on a stable, flat surface.
- Wax Warning: For candlesticks: ensure candle wax does not directly contact the resin.

### **For Kiddush Cups:**

- This delicate Kiddush Cup is handcrafted with precision and care. To maintain this delicate art piece in its best condition for as long as possible, please adhere to the following guidelines:
- Washing: The kiddush cup cannot be washed in the dishwasher; it must be cleaned exclusively by hand.
- Exterior Cleaning: Special care is required when cleaning the exterior, where the glass shards and resin are located.
- Cleaners: Do not use harsh cleaners on your art piece.
- Light Cleaning: Wipe gently with a damp cloth if necessary.
- Heat & Fire: Do not put the art piece in contact with heat sources or direct contact with fire.
- Sunlight: Do not expose the art piece to direct or indirect sunlight.
- Handling: When moving or using it, handle it with gentle hands to prevent any damage or scratches.

### **For Jewelry:**

Cleaning: To clean, wipe gently with a soft cloth.

Moisture & Chemicals: Avoid exposure to water, perfume, lotions, and chemicals.

Storage: Store in a cool, dry place.



## Shipping & Pickup Guide (Israel)

### 1. Studio Drop-off & Pickup (Tel Aviv)

**Drop-off:** You can drop off your glass, flowers, or personal items at the studio at your convenience. (Instructions sent after ordering).

**Fresh Flowers:** Must be delivered to the studio within 3 days maximum after your event.

**Order Pickup:** Once your artwork is ready, pickup is by appointment only.

### 2. Courier Services

- **Standard Shipping** (Up to 5 business days): **50₪**.
- **Express Shipping** (Up to 2 business days): **75₪**.

## International Shipping & Taxes Guide

### 1. Sending Items to the Studio (Before Production)

- **Requirements: Flowers** must be completely dried (no fresh flowers from abroad). **Glass shards** can be shipped anytime.
- **In-Person Drop-off:** Friends or family traveling to Israel can drop off your items at my Tel Aviv studio.
- **Shipping on Your Own:** You can use any method, but I highly recommend DHL, FedEx, or UPS.
  - Note: Shipping costs are not included. You must provide a tracking number.
  - Support: I will send you a packing and customs label guide after you order.
- US Customers Special (DHL Home Pickup): For **195₪**, I can arrange for DHL to pick up your glass shards directly from your US home and deliver them to my studio.

### 2. Receiving Your Finished Artwork (Customs & Taxes)

- **Duties & Taxes:** Any import duties, customs taxes, or local clearance fees, if applicable, in your country are the sole responsibility of the customer.
- **Payment:** These charges are determined by your country and billed directly to you by the courier company/local customs.
- **Package Value:** The declared value on customs documents will strictly match your actual purchase invoice.

